

X-ARCC[®]

Our Innovative Design Process

At X-ARCC®, our design process is driven by creativity and precision. We believe in taking a collaborative approach, ensuring that every detail is carefully considered to achieve outstanding results. From conceptualization to execution, we are committed to providing exceptional 2D&3D designs, and engineering solutions that redefine industry standards.



ARCHITECTURAL PLANS

At X-ARCC®, we pride ourselves on our dedication to designing exceptional commercial and residential exteriors . Our commitment is to deliver high-quality results tailored to meet various budgetary requirements, starting from €445 for small residential projects. Our services include comprehensive 3D and 2D technical drawings. We collaborate closely with your selected contractor to ensure a smooth transition and maintain clear communication throughout the entire project. Additionally, we offer a 24-hour technical support service to promptly address any changes or issues, ensuring minimal disruption to your project.





INTERIOR DESIGN

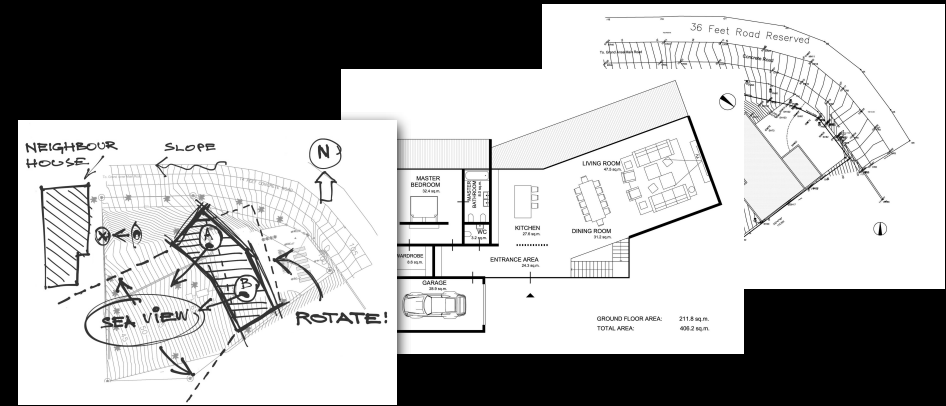
At X-ARCC®, we pride ourselves on our dedication to designing exceptional commercial and residential interiors. Our commitment is to deliver high-quality results tailored to meet various budgetary requirements, starting from €235 for small residential projects. Our services include comprehensive 3D and 2D technical drawings. We collaborate closely with your selected contractor to ensure a smooth transition and maintain clear communication throughout the entire project. Additionally, we offer a 24-hour technical support service to promptly address any changes or issues, ensuring minimal disruption to your project.

HOW WE WORK?

STEP 1.

CASE STUDY & DESIGN CONCEPT

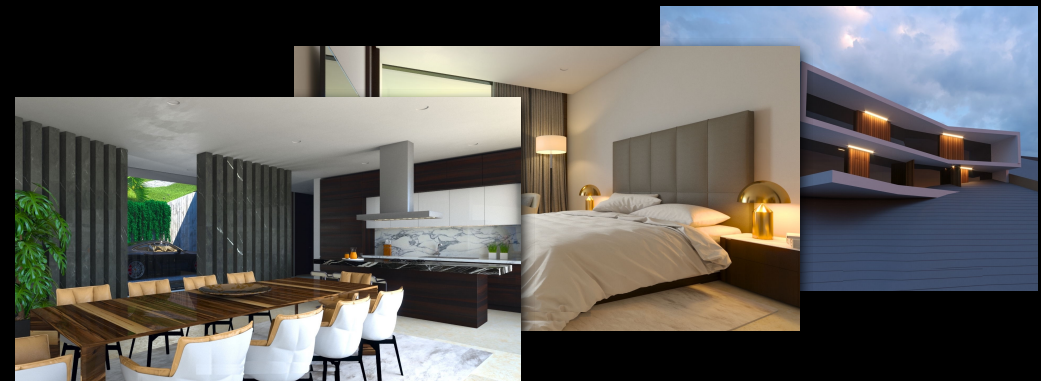
In this phase we collect reference images and examples, decipher your needs and desires, assess advantages and disadvantages of your case particularly (neighborhood, access roads location, sunlight, desired viewpoints, land relief etc.)



STEP 2.

ARCHITECTURAL VISUALIZATIONS

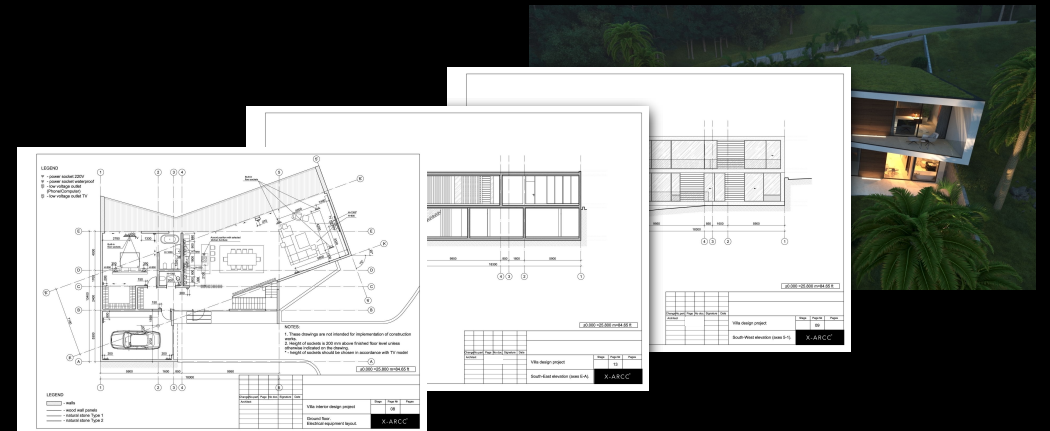
3D visuals of the project with video to see exactly how your project will look. Exterior & interior imagery.







STEP 3.

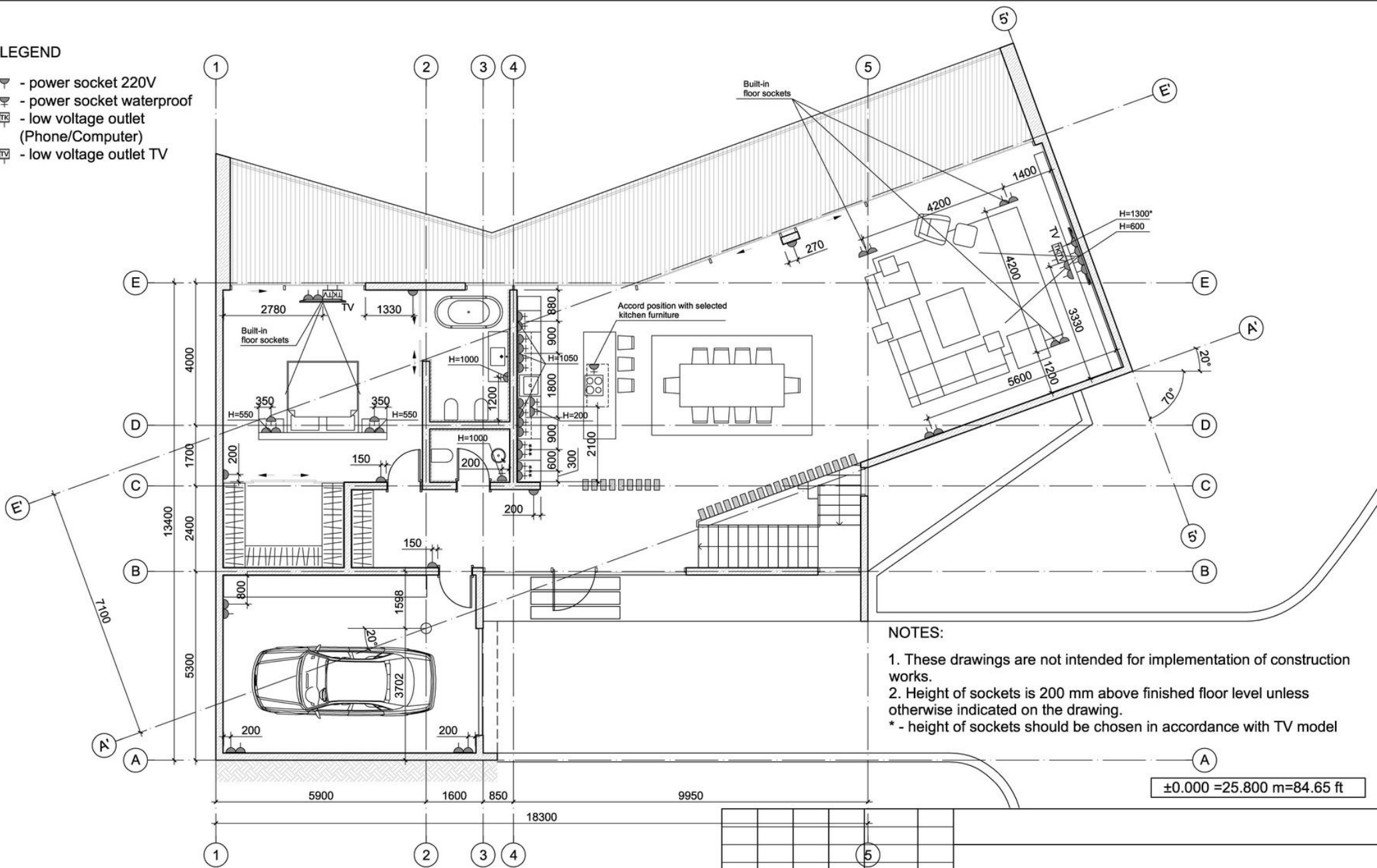
ARCHITECTURAL DRAWINGS & FINAL PROJECT

Professional detailed drawings. Now the idea can be implemented by your chosen construction company.



LEGEND

-  - power socket 220V
-  - power socket waterproof
-  - low voltage outlet (Phone/Computer)
-  - low voltage outlet TV







NOTES:

1. These drawings are not intended for implementation of construction works.
 2. Height of sockets is 200 mm above finished floor level unless otherwise indicated on the drawing.
- * - height of sockets should be chosen in accordance with TV model

±0.000 = 25.800 m = 84.65 ft

LEGEND

-  - walls
-  - wood wall panels
-  - natural stone Type 1
-  - natural stone Type 2

Change No.	part	Page	No doc.	Signature	Date			
Architect						Villa interior design project		
						Stage		
						Page №		
						Pages		
						08		
Ground floor.						X-ARCC®		
Electrical equipment layout.								



www.x-arcc.com